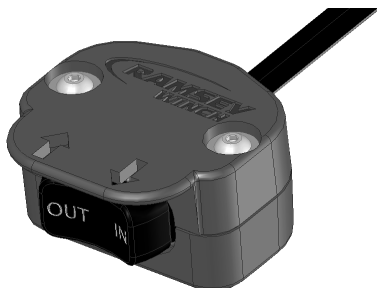
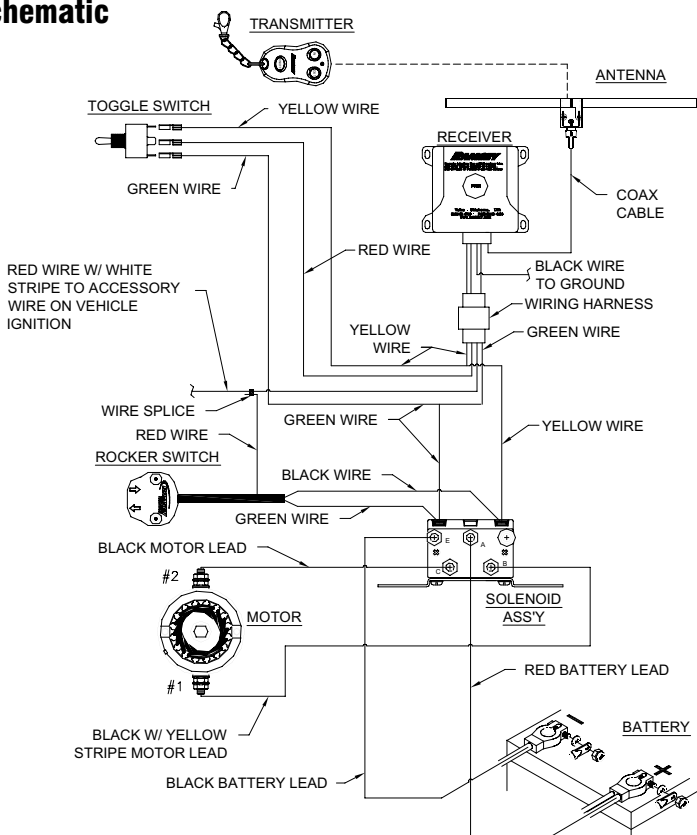


# INSTALLATION INSTRUCTIONS FOR REPLACEMENT MINI ROCKER SWITCH KIT #256129 FOR ATV WINCH WITH WIRELESS REMOTE SWITCH



## Electrical Schematic



**RAMSEY WINCH COMPANY**  
**P.O. BOX 581510 TULSA, OK 74158-1510 USA**  
**PHONE: (918) 438-2760 FAX: (918) 438-6888**  
 visit us at <http://www.ramsey.com>

## Before Beginning Installation

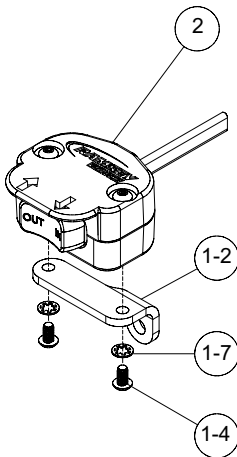
1. **Disconnect negative (-) battery cable from battery. Turn off vehicle ignition.**
2. **Disengage winch clutch.**
3. Remove hood or cowling as necessary for easier access to installation area.
4. Locate accessory wire from vehicle ignition switch that is powered only when ignition is ON. Use this wire when splicing to Red wire on Rocker switch.
5. Make sure locations are close enough for wiring connections to be made without making alterations to wire lengths.

**CAUTION: DO NOT CONNECT NEGATIVE BATTERY CABLE OR ENGAGE CLUTCH UNTIL INSTALLATION IS COMPLETE. WINCH COULD BEGIN SPOOLING CABLE UNEXPECTEDLY CAUSING INJURY OR DAMAGE TO WINCH.**

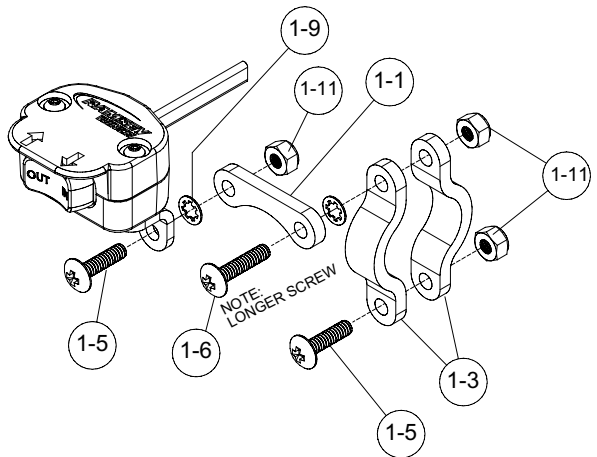
## Installing the Rocker Switch

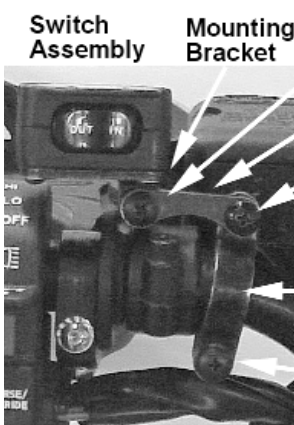
For clarification, see wiring schematic on page 1.

1. Install green Wire Connector (item #1-12) to green wire on Rocker Switch (item #2) and black Wire Connector (item #1-13) to black wire on Rocker Switch, as shown at right.



2. The Rocker Switch assembly (item #2) will be assembled with the two halves of the housing already attached. Install the Mounting Bracket (item #1-2) using (2) #6 screws (item #1-4) and shake-proof washers (item #1-7). See figure below. Tighten securely. Do not overtighten.
3. Install (2) Handle Bar Clamps (item #1-3) around ATV handle bars at a convenient location. Use a 3/4" long #10 screw (item #1-5) and #10 locknut (item #1-9) to secure them. See figures below and at right. Secure loosely, do not tighten.
4. Install the Mounting Arm (item #1-1) to the Handle Bar Clamps using a 7/8" long #10 screw (item #1-6), shake-proof washer (item #1-8), and locknut (item #1-9). Install the shake-proof washer between the handle bar clamps and the mounting arm. See figures below. Do not tighten.
5. Install the Mounting Bracket (with rocker switch attached) to the Mounting Arm Bracket using a 3/4" long #10 screw, shake-proof washer, and locknut. Install the shake-proof washer between the mounting arm bracket and the mounting bracket.





**Switch Assembly**

**Mounting Bracket**

**#10 X 3/4" long screw, shake-proof washer, & locknut**

**Mounting Arm**

**#10 X 7/8" long screw, shake-proof washer, & locknut**

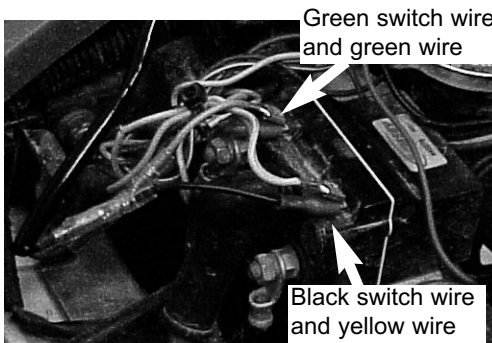
**Handle Bar Clamp**

**#10 X 3/4" long screw & locknut**

6. Tighten all screws for the handle bar clamps and mounting brackets securely, positioning the rocker switch as desired.
7. Route the Rocker Switch wire down the handle bars to where the solenoid is installed. Turn the handle bars fully right and left to ensure enough slack in the wire. Make sure wire is not drawn taut across any surface that could damage it. Use cable ties to anchor wire. Do not connect wires to solenoid yet.
8. Push ATV Accessory wire and red wire from switch into plastic splice (item #1-10). Fold splice clip over itself and snap closed.

## Finish Installation

1. Unplug spade connectors from solenoid. Connect black wire from switch into right terminal (terminal above black with yellow stripe motor lead). Connect green wire from switch into left terminal (terminal above black motor lead).
2. Plug the spade connectors for the existing wireless remote into the "piggyback" plugs above the switch wires. Plug the yellow wire above the black switch wire and the green wire above the green switch wire. See below.



3. Confirm that winch clutch is disengaged.
4. Connect negative (-) battery cable to vehicle battery. Connect Black Battery Lead from winch to negative (-) vehicle battery terminal.
5. With ignition switch OFF, press Rocker switch to "OUT"—winch should not operate. If the winch does operate with the ignition off, confirm that proper accessory wire from ignition was spliced.
6. Spool a few feet of cable out by hand. Engage winch clutch. Turn ignition switch ON and press Rocker switch to "OUT"—winch should spool cable out. If winch does not operate with ignition on, check wiring against the schematic on page 1.
7. If winch spools cable IN instead of OUT, turn off ignition and reverse black and green wires on solenoid.

## Limited Lifetime Warranty

Ramsey Winch offers a limited lifetime warranty for each new Ramsey ATV winch against manufacturing defects in workmanship and materials on all manufactured components.

Warranty registration cards for each winch must be submitted at the time of purchase, or within 90 days. Online registration of your winch is available at [www.ramsey.com](http://www.ramsey.com).

All Ramsey mounting kits and other accessories carry a 1-year limited warranty against defects in materials and workmanship.

This warranty is void if winch is used in commercial/industrial applications other than front mount self recovery.

Electrical components consisting of motors, solenoids, wiring, wire connectors, and associated parts carry a limited 1-year warranty.

The obligation under this warranty, statutory or otherwise, is limited to the replacement or repair at the manufacturers factory, or at a point designated by the manufacturer, of such part as shall appear to the manufacturer, upon inspection of such part, to have been defective in material or workmanship. This Warranty does not obligate Ramsey Winch Company to bear the cost of transportation charges in connection with the replacement or repair of defective parts, nor shall it apply to a product upon which repairs or alterations have been made, unless authorized by the manufacturer, or for equipment misused, neglected, or improperly installed.

**Important notice: To the fullest extent permitted by applicable law, the following are hereby excluded and disclaimed:**

1. All warranties of fitness for a particular purpose;
  2. All warranties of merchantability;
  3. All claims for consequential or incidental damages.
- There are no warranties that extend beyond the description that appears on the face hereof.**

**Some states do not allow the above exclusions or disclaimers in consumer transactions and as such this disclaimer/exclusion may not apply to your particular case.**

**To the extent such warranties of fitness for a particular purpose or merchantability are deemed to apply to this product, they exist only for so long as the express limited warranty elsewhere set forth is in existence.**

Ramsey Winch Company makes no warranty in respect to accessories, same being subject to the warranties of their respective manufacturers.

Ramsey Winch Company, whose policy is one of continuous product improvement, reserves the right to improve any product through changes in design or materials as it may deem desirable without being obligated to incorporate such changes in products of previous manufacture.

If field service at the request of the buyer is rendered and the fault is found not to be with Ramsey Winch Company's product, the buyer shall pay the time and expense of the field representative. Bills for service, labor or other expenses which have been incurred by the buyer without express approval or authorization by Ramsey Winch Company will not be accepted.

This Warranty gives you specific legal rights and you may also have other legal rights which vary from state to state.

## PARTS LIST

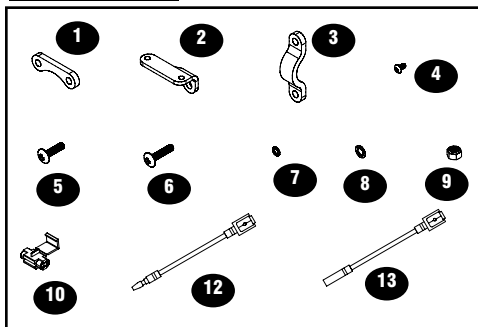
### ITEM

NO.	QTY.	PART NO.	DESCRIPTION
1	1	257560	HARDWARE KIT (see below)
2	1	282065	ROCKER SWITCH

### Hardware Kit:

ITEM NO.	QTY.	DESCRIPTION
1-1	1	Mounting Arm Bracket
1-2	1	Mounting Bracket
1-3	2	Handle Bar Clamp Bracket
1-4	2	Screw #6-32NC x 1/4" Socket Head Black
1-5	2	Screw #10-24NC x 3/4" Truss Cross Recess Black
1-6	1	Screw #10-24NC x 7/8" Truss Cross Recess Black
1-7	2	Washer #6 Shake Proof
1-8	2	Washer #10 Shake Proof
1-9	3	Locknut #10-24NC Hex Black
1-10	1	Wire Splice
1-11	1	Cable Ties (pkg. of 12) [not pictured]
1-12	1	Wire Connector (to green)
1-13	1	Wire Connector (to black)

### 1-Hardware Kit



### 2-Rocker Switch

